

## StarWind - Quick Start Guide

Tuesday, July 14, 2009



[www.starwindsoftware.com](http://www.starwindsoftware.com)

Copyright © StarWind Software 2008-2009. All rights reserved.

## COPYRIGHT

Copyright © StarWind Software 2008-2009. All rights reserved. No part of this publication may be reproduced, stored in a retrieval system, or transmitted in any form or by any means, electronic, mechanical, photocopying, recording or otherwise, without the prior written consent of StarWind Software.

## TRADEMARKS

“StarWind”, “StarWind Software” and the StarWind and the StarWind Software logos are trademarks of StarWind Software which may be registered in some jurisdictions. All other trademarks are owned by their respective owners.

## CHANGES

The material in this document is for information only and is subject to change without notice. While reasonable efforts have been made in the preparation of this document to assure its accuracy, StarWind Software assumes no liability resulting from errors or omissions in this document, or from the use of the information contained herein. StarWind Software reserves the right to make changes in the product design without reservation and without notification to its users.

## TECHNICAL SUPPORT AND SERVICES

If you have questions about installing or using this software, check this and other documents first - you will find answers to most of your questions here or there. If you need further assistance, please contact us.

## Table of Contents

<b>Getting Started with StarWind.....</b>	<b>4</b>
<b>Downloading and installing.....</b>	<b>5</b>
<b>Registering the Software.....</b>	<b>14</b>
<b>Creating a device.....</b>	<b>21</b>

## **Guide**

### **Getting Started with StarWind**

This guide is intended for experienced Windows system administrators who will be installing the StarWind iSCSI SAN software in their IT infrastructure. StarWind can be used as shared storage for almost any application, it is fully compatible for use with VMware, Hyper-V or Server Clusters for applications such as SQL Server, Exchange and SharePoint.

## Downloading and installing

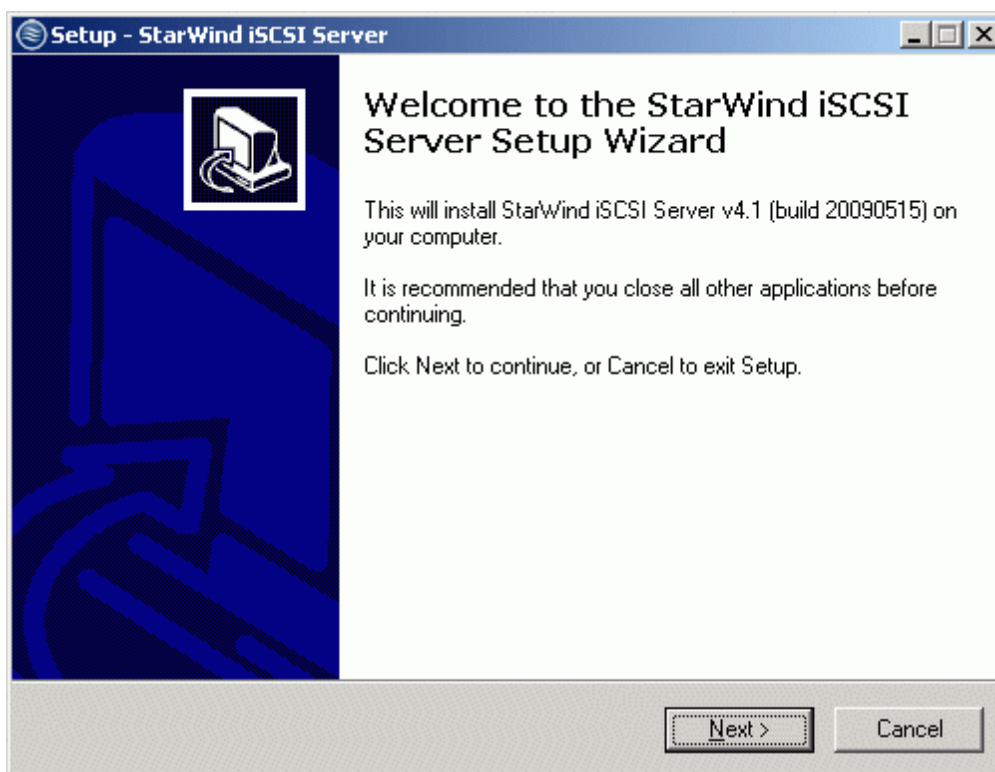
First thing you need to do is obtain the StarWind setup executable file from our website.

The setup file is the same for x86 and x64 so you don't need to worry about the platform compatibility.

<http://www.starwindsoftware.com/download-free-trial>

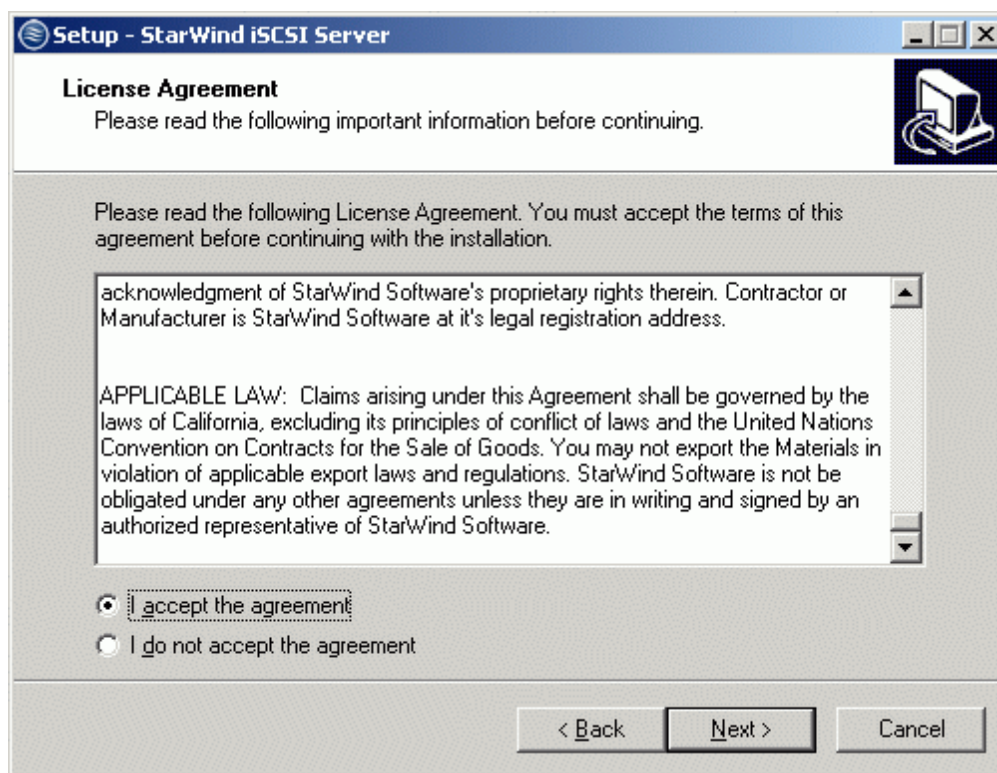
Once you have downloaded the setup executable launch it on the computer you want to turn into SAN storage.

A Setup Wizard window will appear:



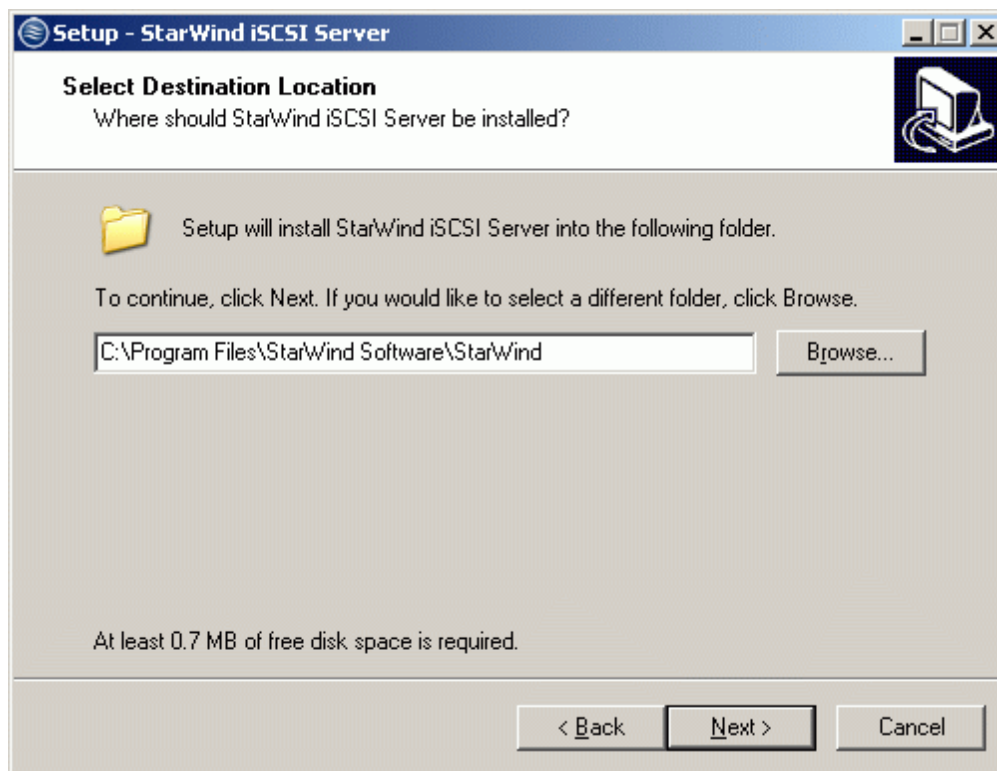
Press the **Next** button to continue.

Read and accept the license agreement.



Press the **Next** button to continue.

Select the installation path.



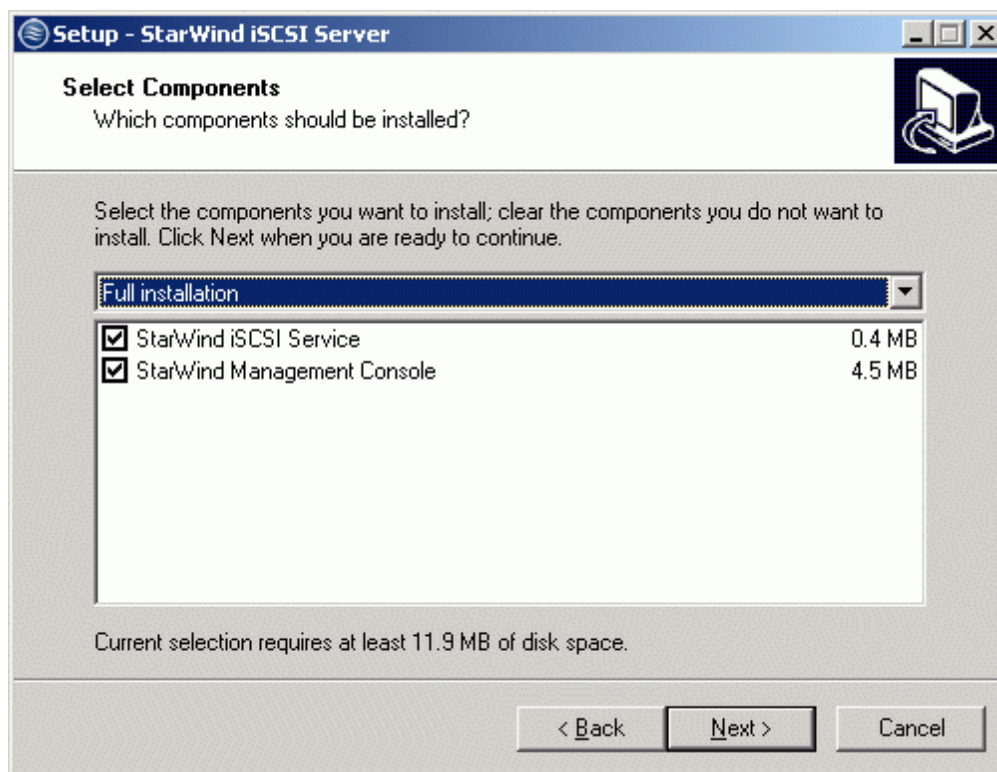
Press the **Next** button to continue.

Specify the installation type:

**Full installation** - includes both StarWind Service and Management Console so that you can manage the resources from the machine where you are installing the product.

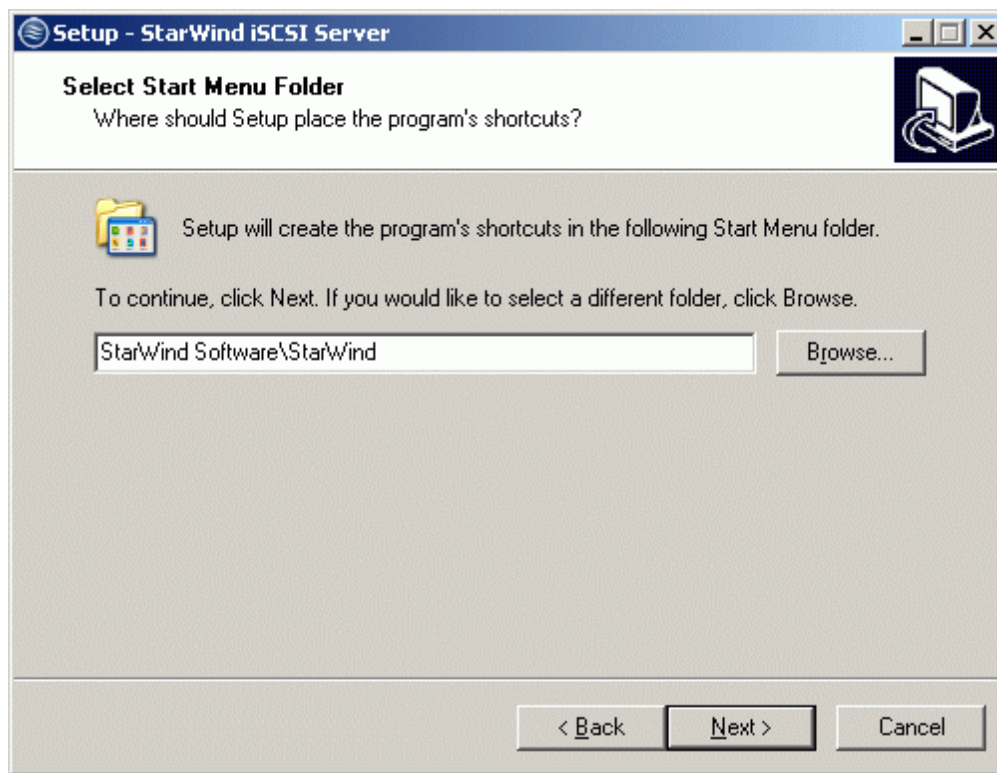
**StarWind iSCSI Service** - best fits for installing on a server which will be managed remotely.

**StarWind Management Console** - The Graphical User Interface (GUI) part of the program, which allows you to create devices on the target servers in your service.



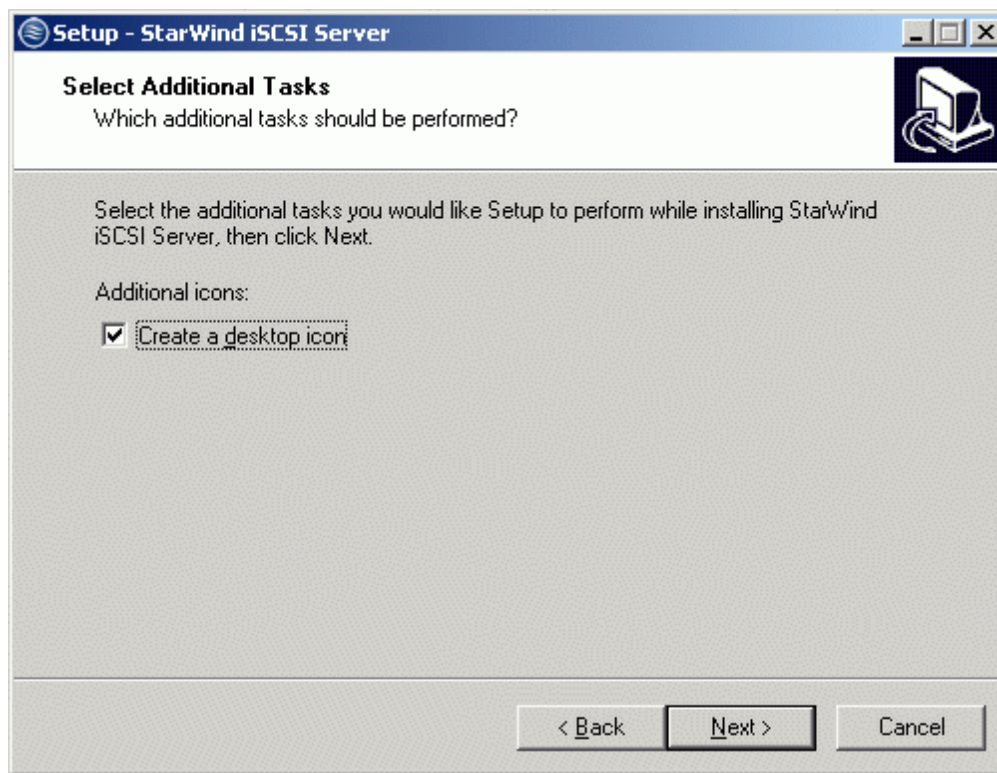
Press the **Next** button to continue.

Specify the Start Menu folder.



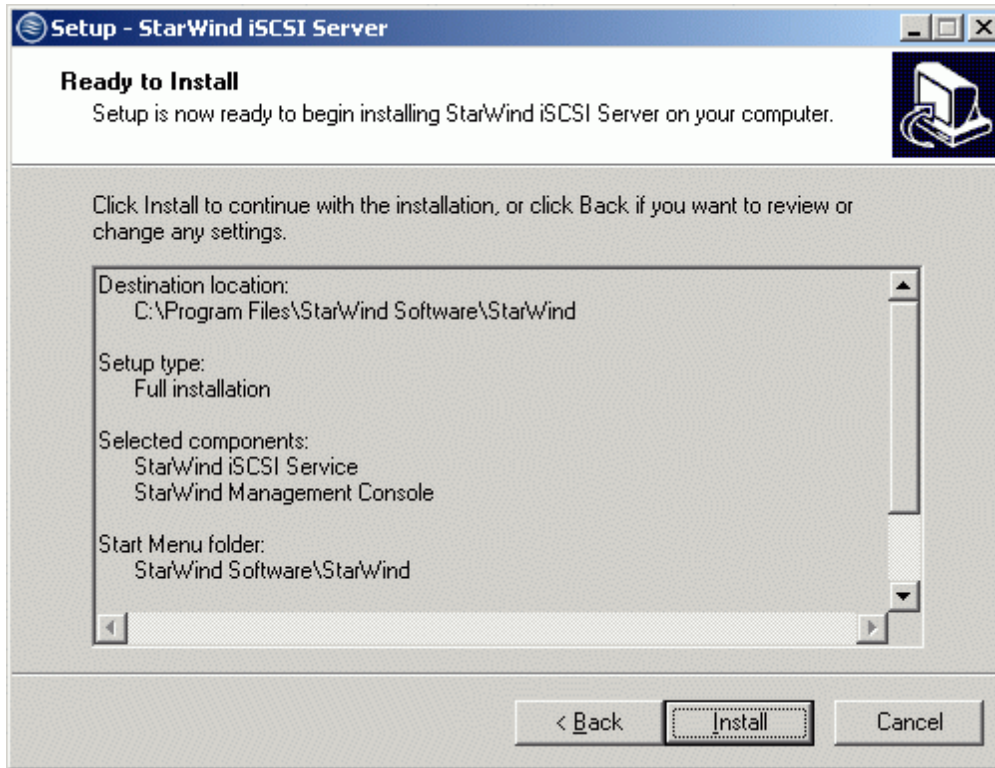
Press the **Next** button to continue.

Enable the checkbox if you need a desktop Icon.



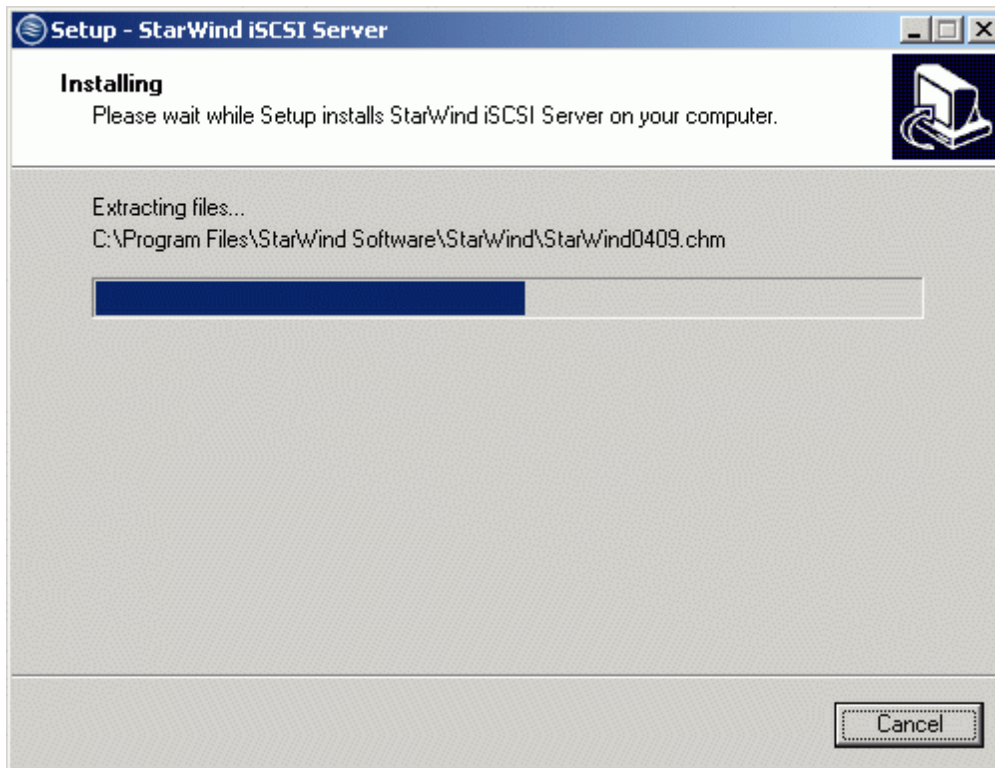
Press the **Next** button to continue.

Review the settings you've specified during the installation setup, click the **Back** button if you need to apply any changes.

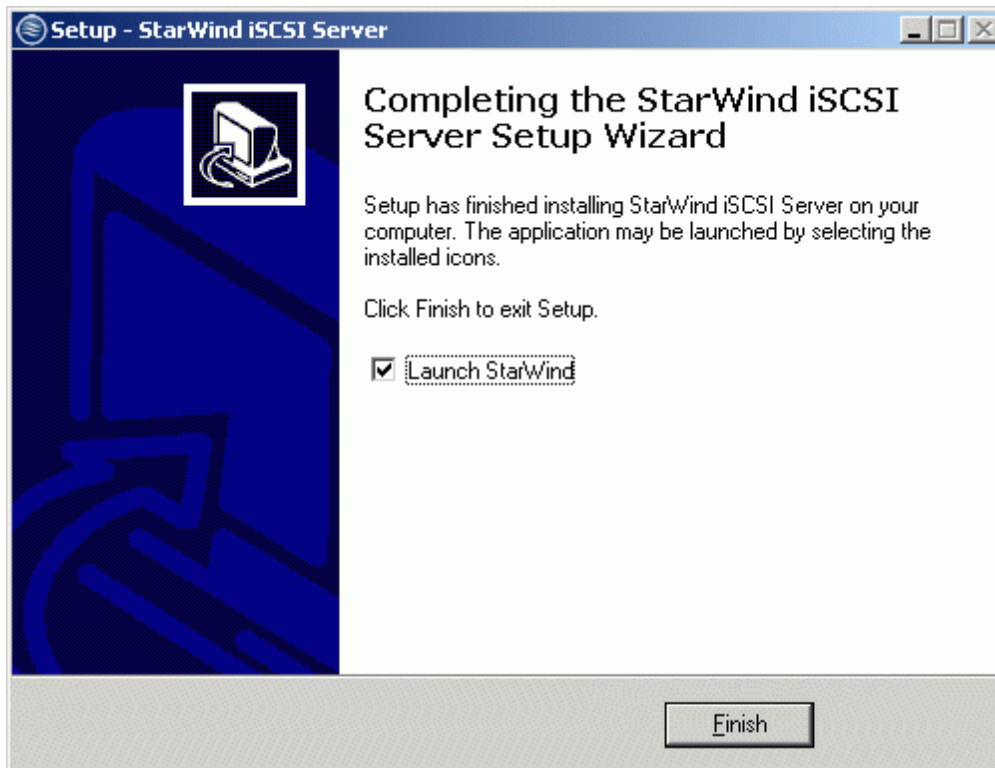


Press the **Next** button to continue.

The Installation will begin and the Program will be installed according to your selections, on your computer.



You have successfully installed StarWind iSCSI Target.  
Enable the checkbox if you want to run StarWind immediately.

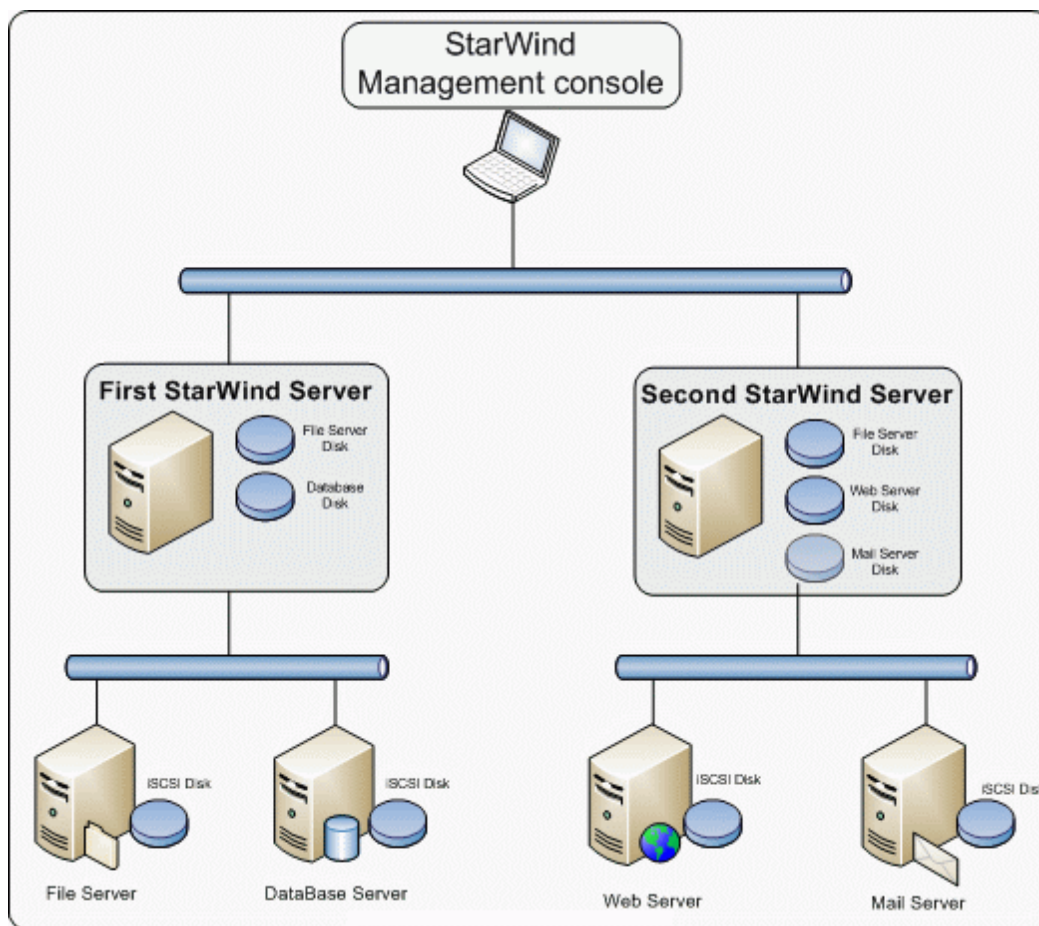


Press the **Finish** button to close the installation wizard.

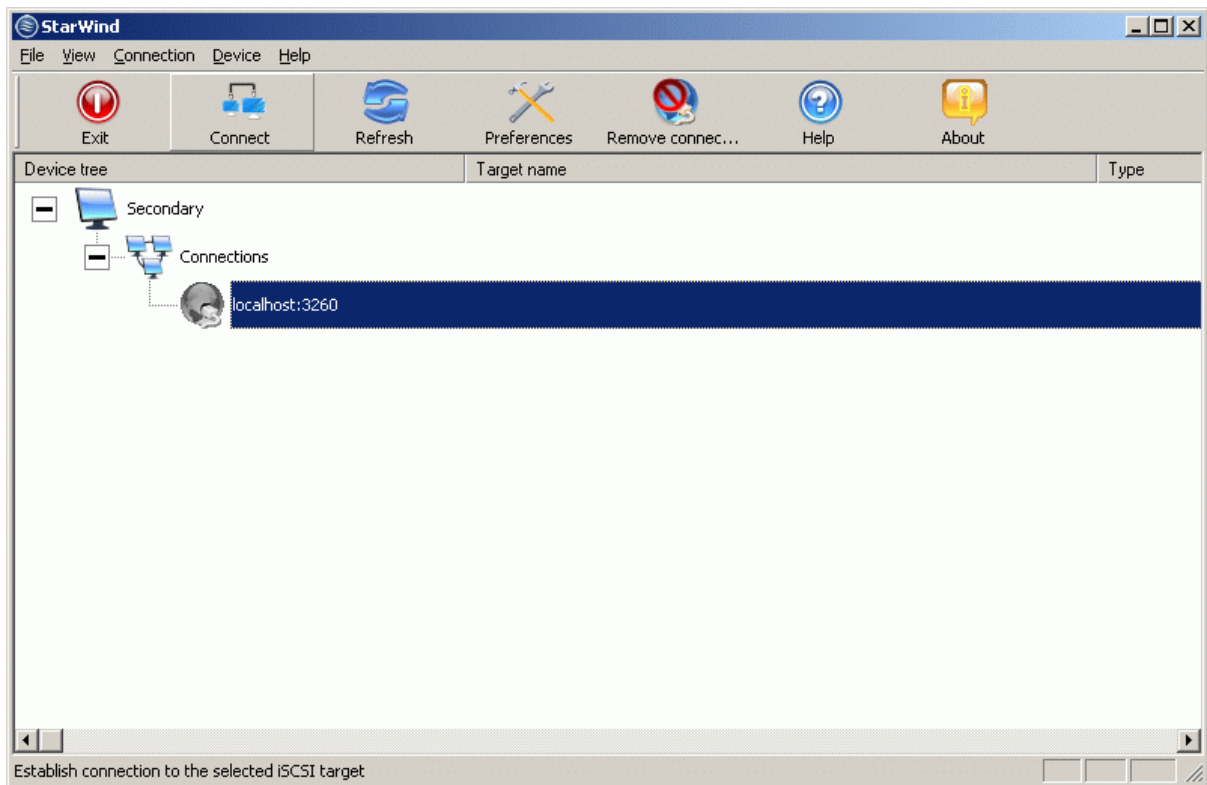
## Registering the Software

Open the StarWind management console by double clicking on the StarWind tray icon.

StarWind management console allows you to manage **multiple** StarWind servers from one computer.

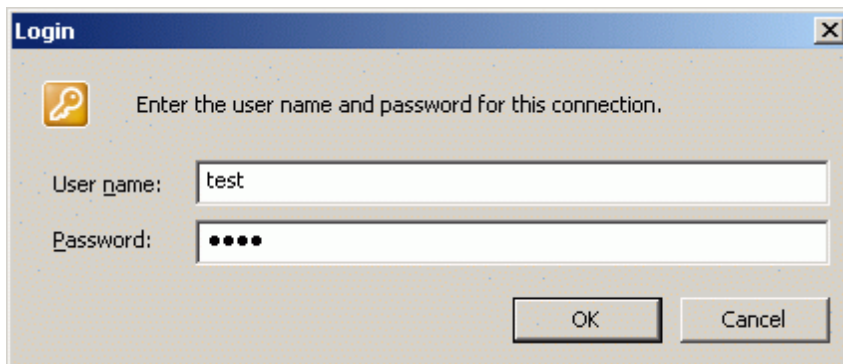


By default there is one connection representing loopback.



Press the **Connect** button.

You will be prompted to enter a username and password. The Default is **test;test** you can always change them later.



Press the **OK** button.

The splash screen will appear showing that in order to work with the server you have to obtain and apply the license.

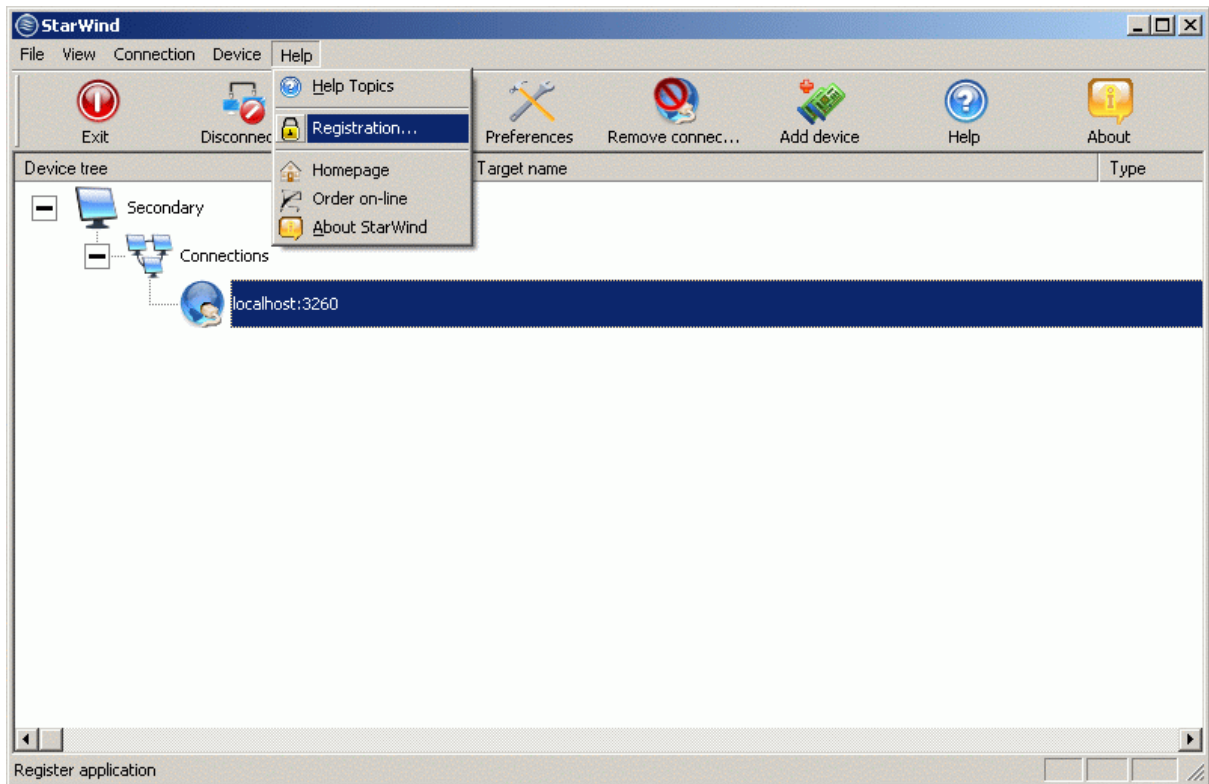


From here you can get trial or Buy a license. Without it your server will not work.

Obtain the license file from our website.

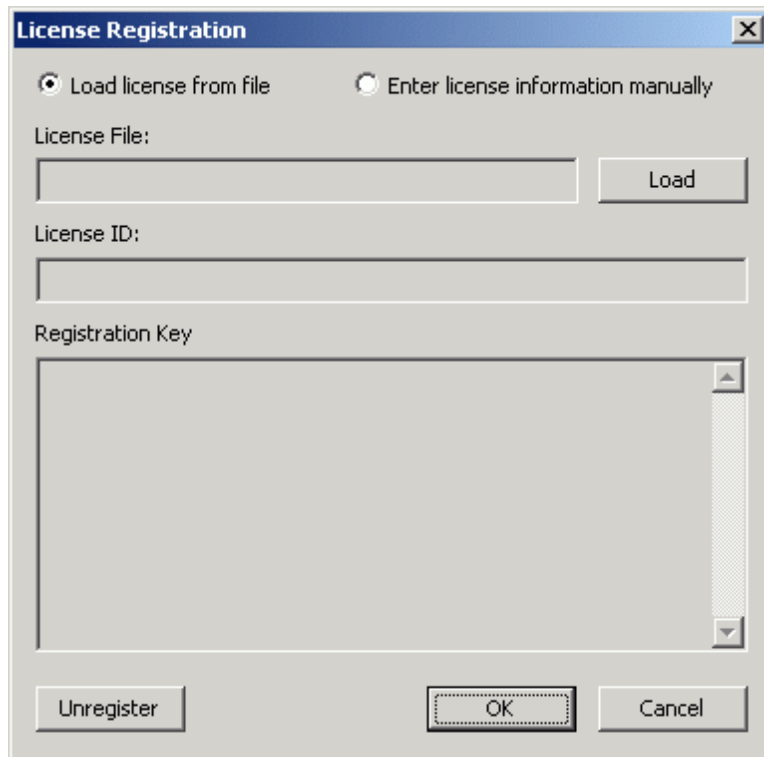
Press the **OK** button to continue.

After you have successfully connected to the target server you can apply the license to the server connected.



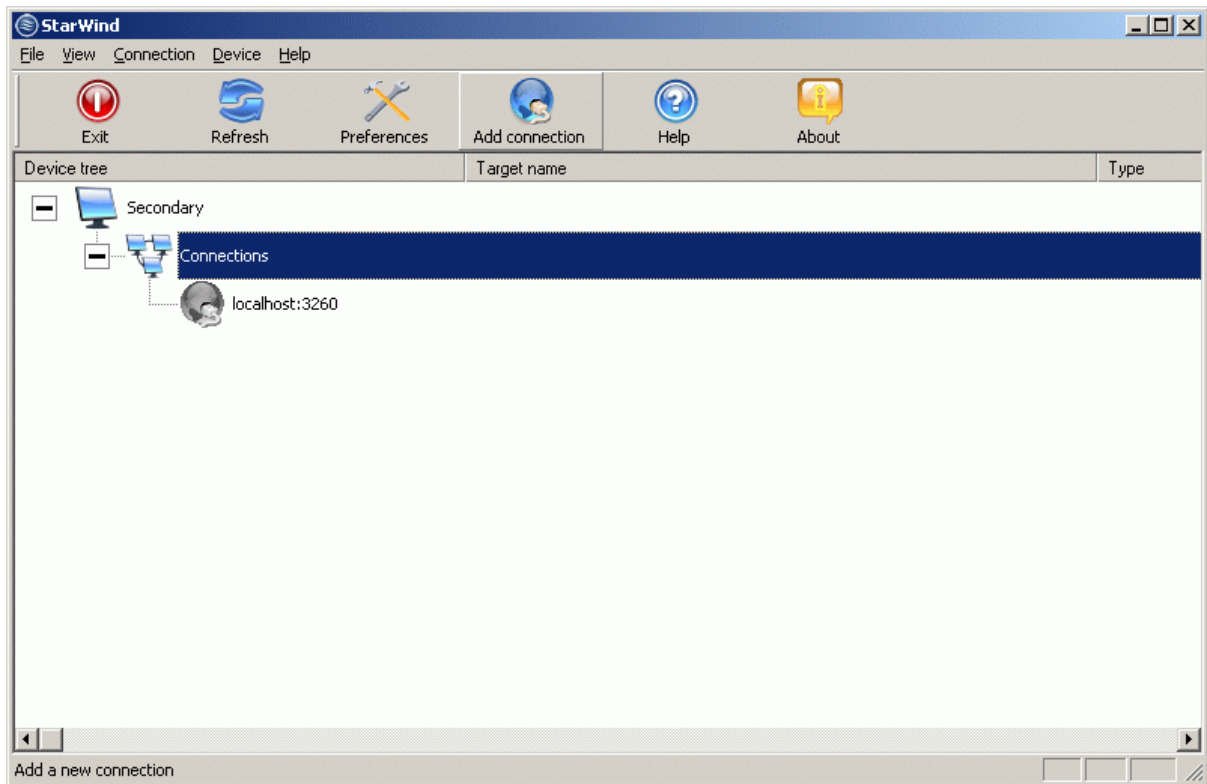
From the help menu select the **Registration...** item.

Registration window will appear. Load the license file by pressing the **Load** button.



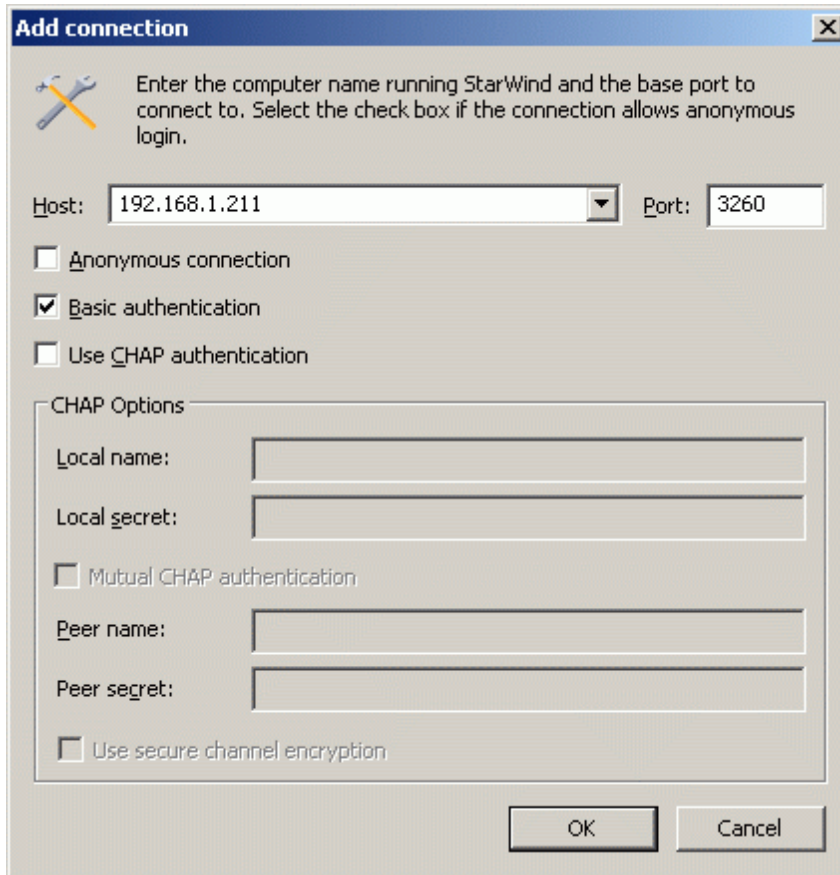
Press the **OK** button to continue.

If you want to apply license on a remote server than select the Connections item.



Press the **Add** connection button.

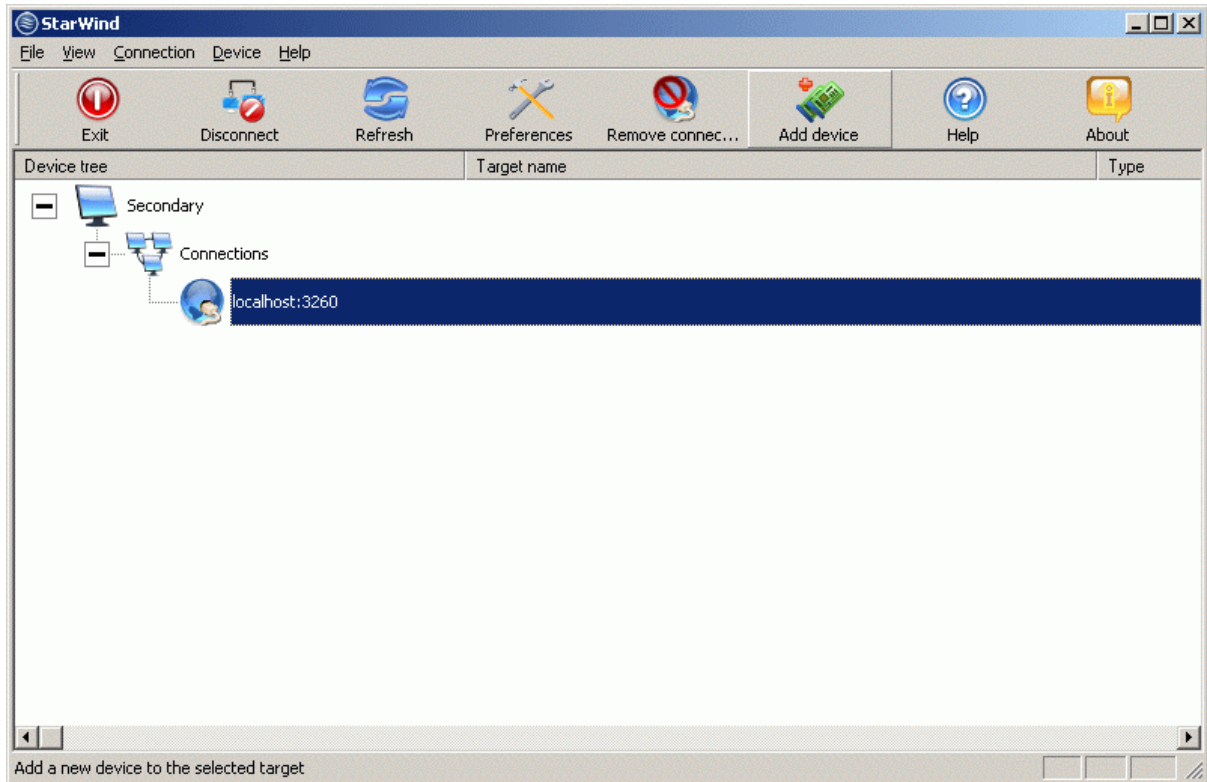
Add Connection window will appear. Specify the target server's IP address.



Press the **OK** button.  
Then perform the same steps as provided above.

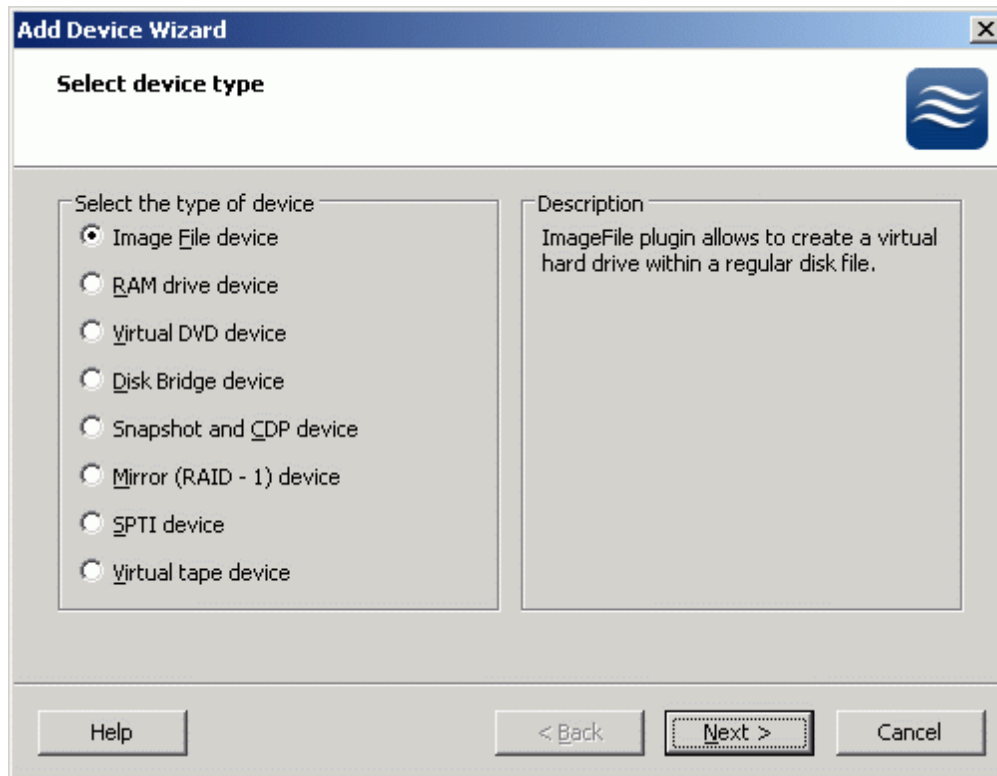
## Creating a device

Select the server where you wish to create the new virtual device.



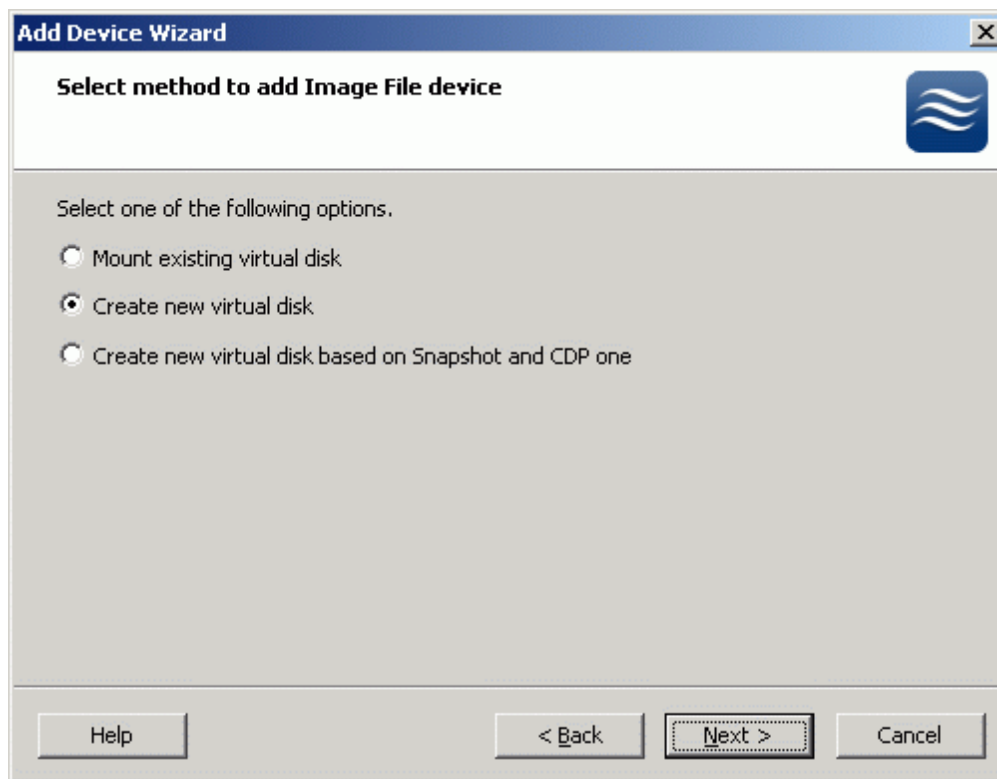
Press the **Add Device** button.

An add Device wizard will appear. Select the type of device to be created.



Press the **Next** button to continue.

Choose Create new virtual disk option.



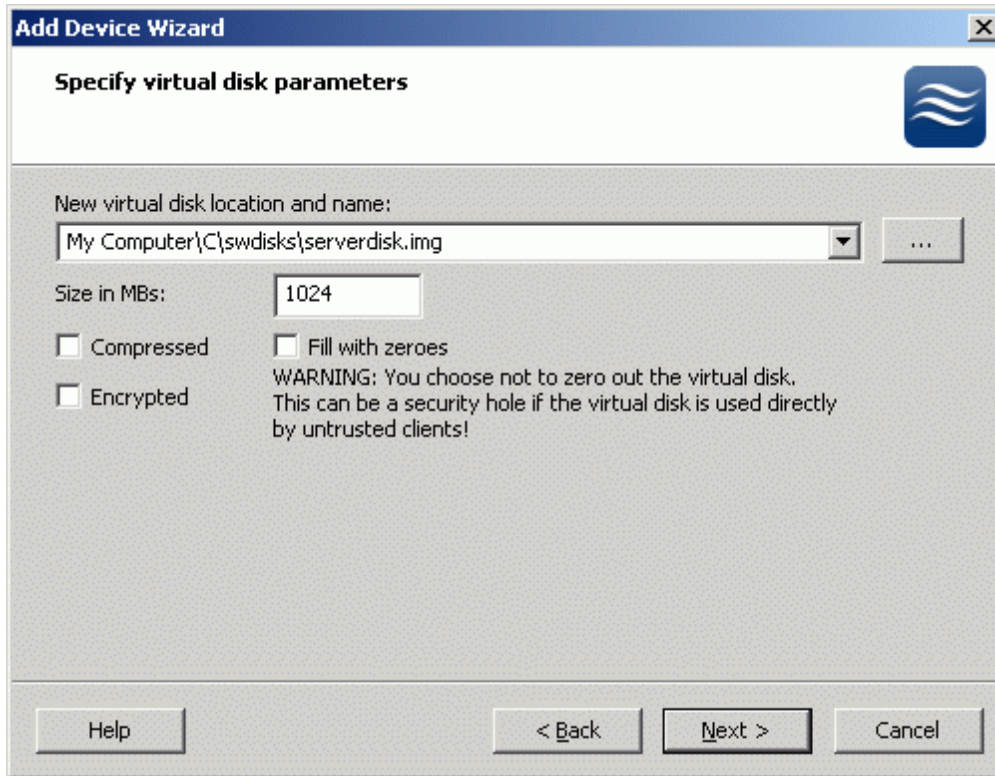
Press the **Next** button to continue.

---

**Note:** the **StarWind Service** running on a remote host should be started from an account, which has the rights to create and modify files.

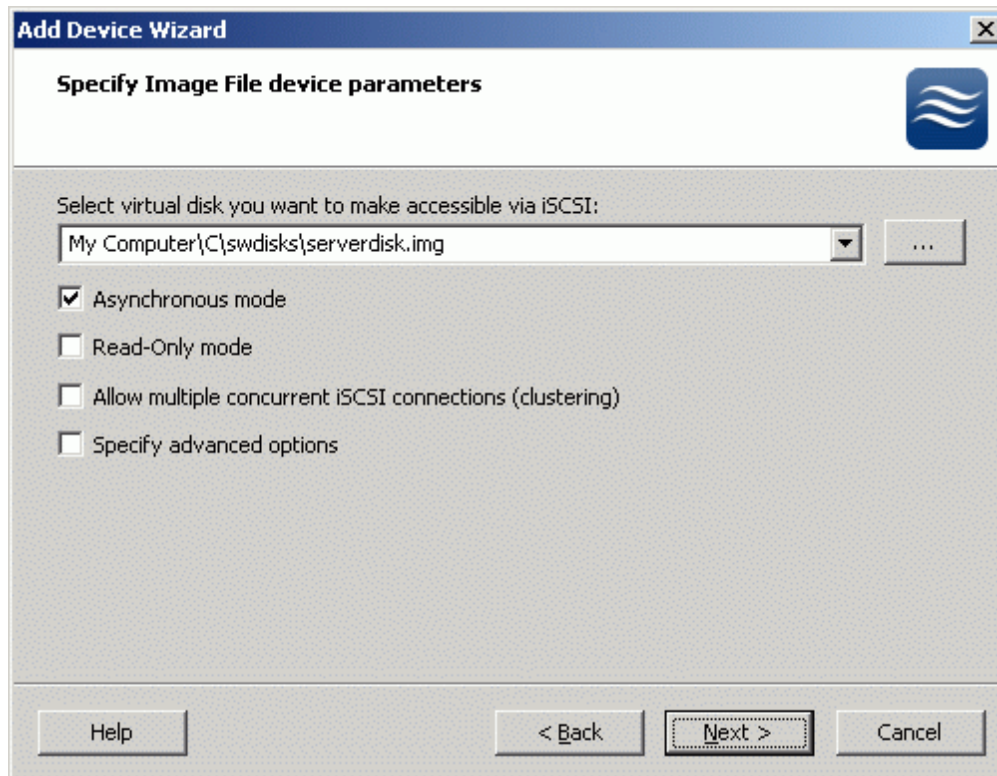
---

Specify the path where the virtual disk should be created by pressing the "... " button.



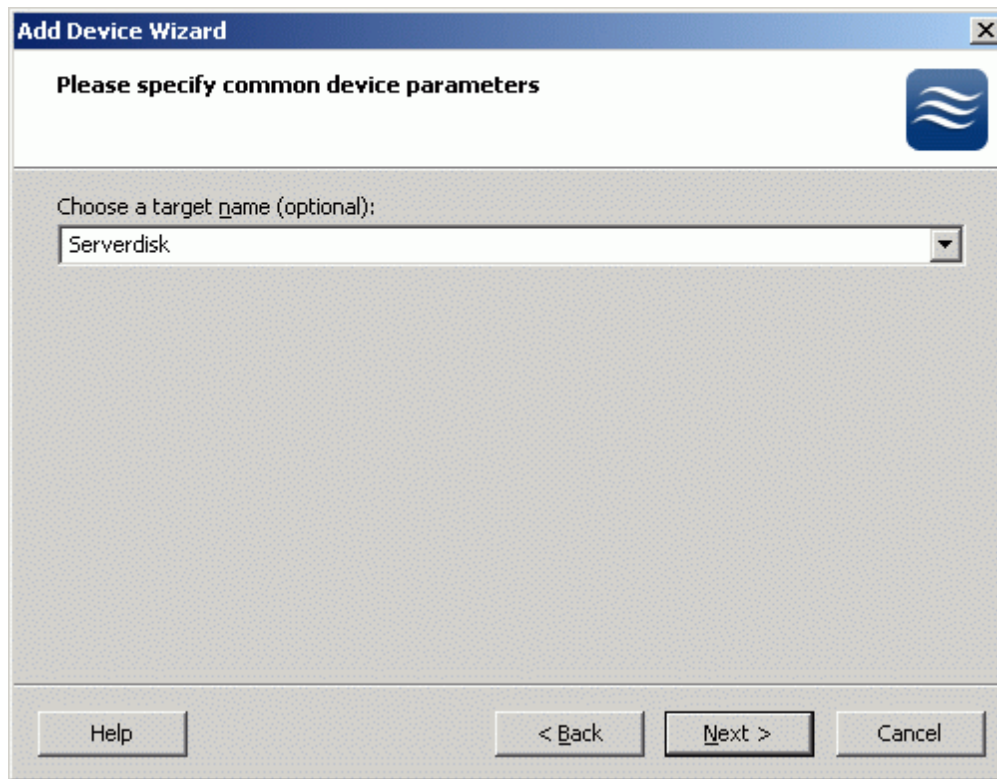
Press the **Next** button.

The virtual disk has some additional parameters. You can read about them in the help section.



Press the **Next** button.

Enter a name for your virtual disk.



Press the **Next** button.

You will see a summary of the options you have set while creating the virtual disk. Press **Back** button if need to apply any changes.



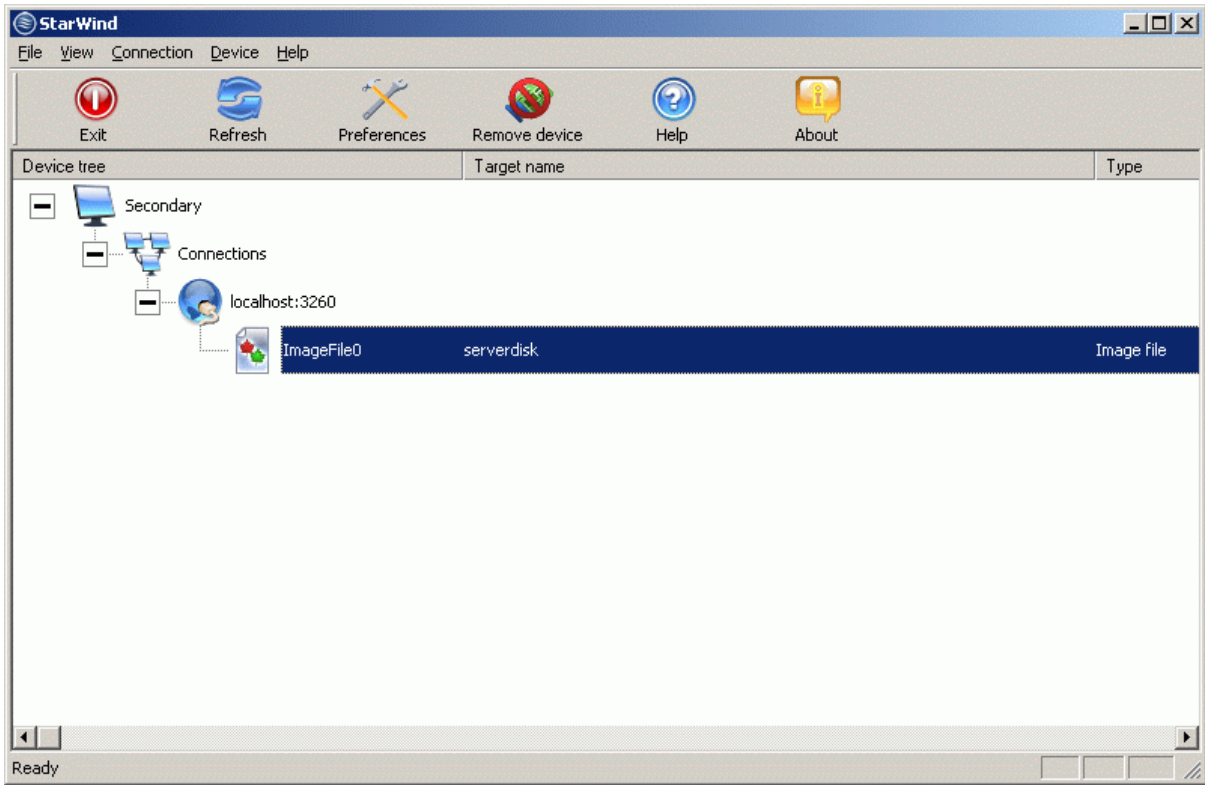
Press the **Next** button.

The window informs that a new virtual disk has been successfully created.



Press the **Finish** button to close the wizard.

After successfully creating the device, the management console will appear as below:



## Contacts

Support: [www.starwindsoftware.com/support](http://www.starwindsoftware.com/support)

Support Forum: [www.starwindsoftware.com/forums](http://www.starwindsoftware.com/forums)

Sales E-mail: [sales@starwindsoftware.com](mailto:sales@starwindsoftware.com)

US Headquarters

Phone: 617-449-7717

Fax: 617-505-5845

EMEA: 1-888-532-2203

**StarWind Software Inc.**

40 Mall Rd., Burlington

MA 01803, USA

[www.starwindsoftware.com](http://www.starwindsoftware.com)